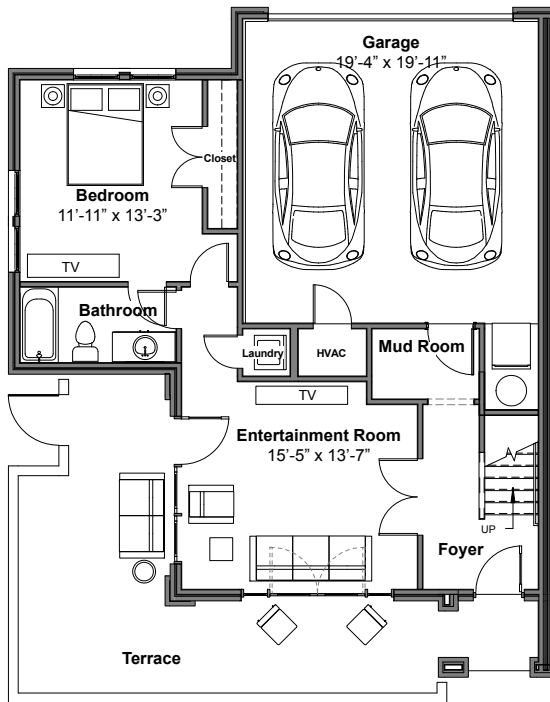


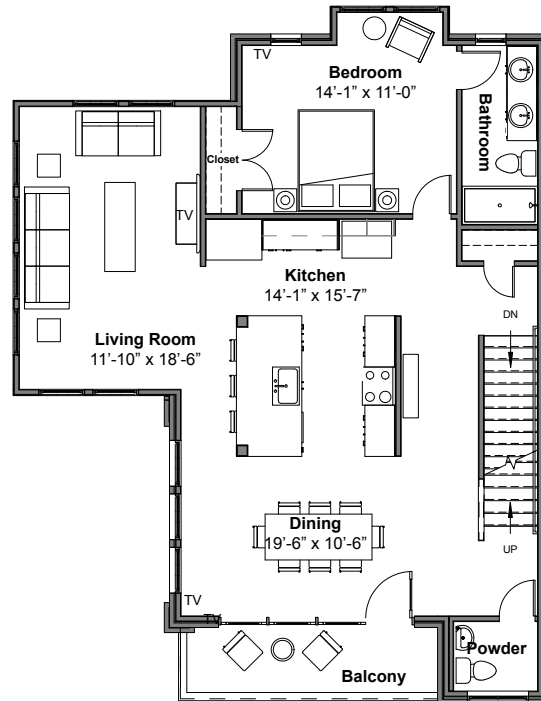


The Summit Floorplan

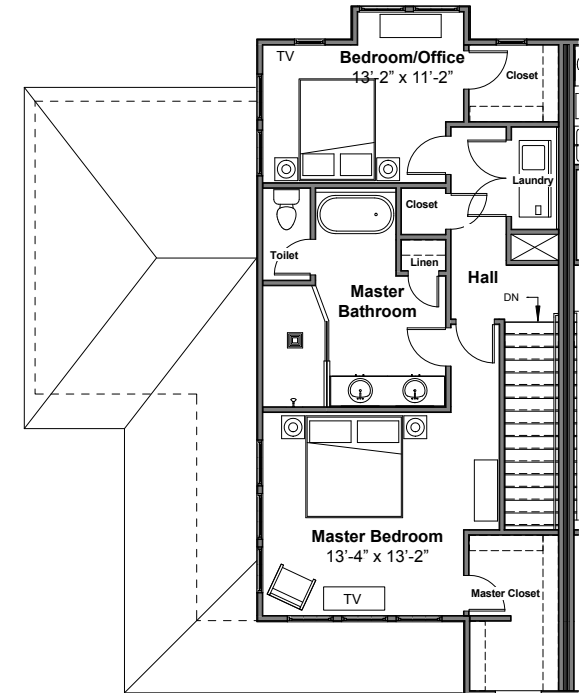
3 Bedrooms | 3.5 Bathrooms | 2,640 SF



First Floor



Main Level



Third Floor



The Summit Floorplan

3 Bedrooms | 3.5 Bathrooms | 2,640 SF

Standard Features

- Large open-concept living area on main level
- Full office or guest room on 3rd floor
- Expansive windows for dynamic lighting
- 9' ceilings on the ground and main level
- Full overlay cabinets with soft close drawers
- Porcelain tile flooring in all bathrooms and laundry
- KitchenAid appliances
- Designer pendant lighting over island
- Single bowl undermount stainless sink
- Chrome cabinet door hardware
- Generous cabinet and pantry space
- Expansive kitchen island
- Chrome Delta faucets throughout
- Craftsman style stained wood front door
- Bronze exterior lighting package
- Ground floor 2-car garages
- Balcony on main level

Included Upgrade Features

- 7" Hardwood flooring throughout
- Chrome Delta Touchless kitchen faucet
- Calcutta Creek quartz countertops throughout
- Floating shelves in kitchen
- 42" Fridge Space
- Spa-inspired master bathroom with freestanding tub and walk-in shower
- Rain-shower head in master bath
- Handheld slide bar in master bath
- Mosaic tile shower floor in master bath
- Crown molding throughout
- Two-toned kitchen design with cotton white cabinets and island cabinets in shale grey
- Pull-out trash bin and roll-out trays in pantry
- Spacious entertainment room on ground floor
- Large wrap-around outdoor terrace on ground floor